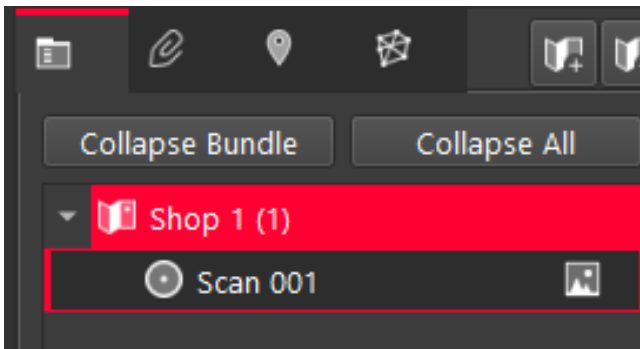


when it has to be **right**

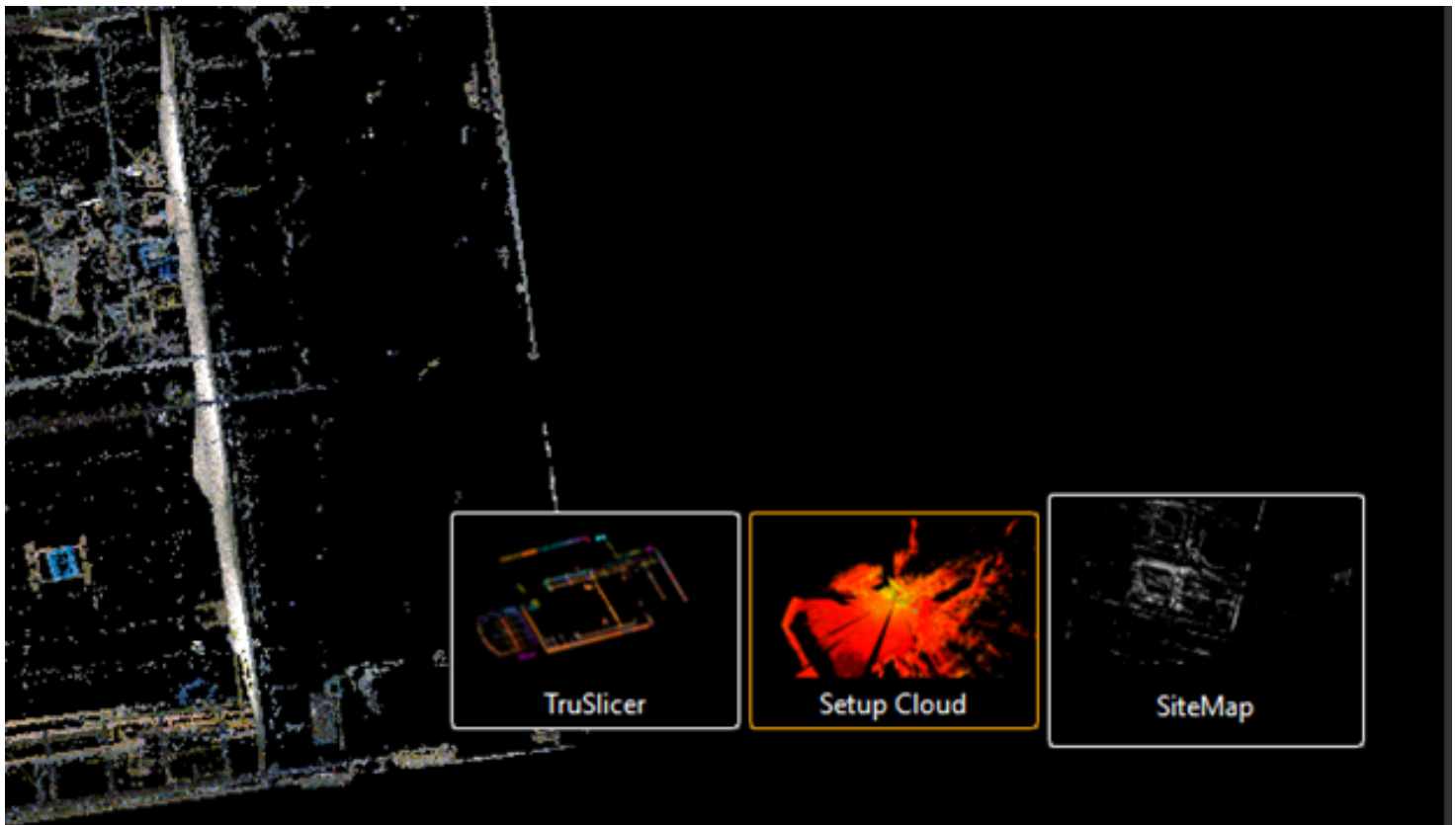


HOW TO DELETE BLK2GO POINTS USING CYCLONE REGISTER 360

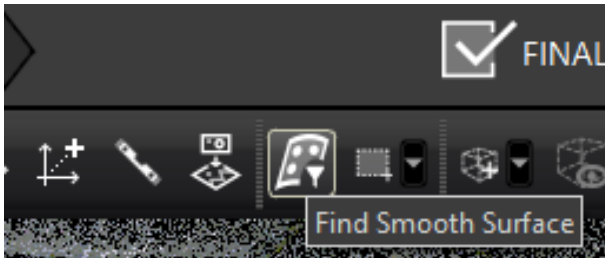
1. Once your scan is imported you will click on the dropdown arrow next to the Site Map.



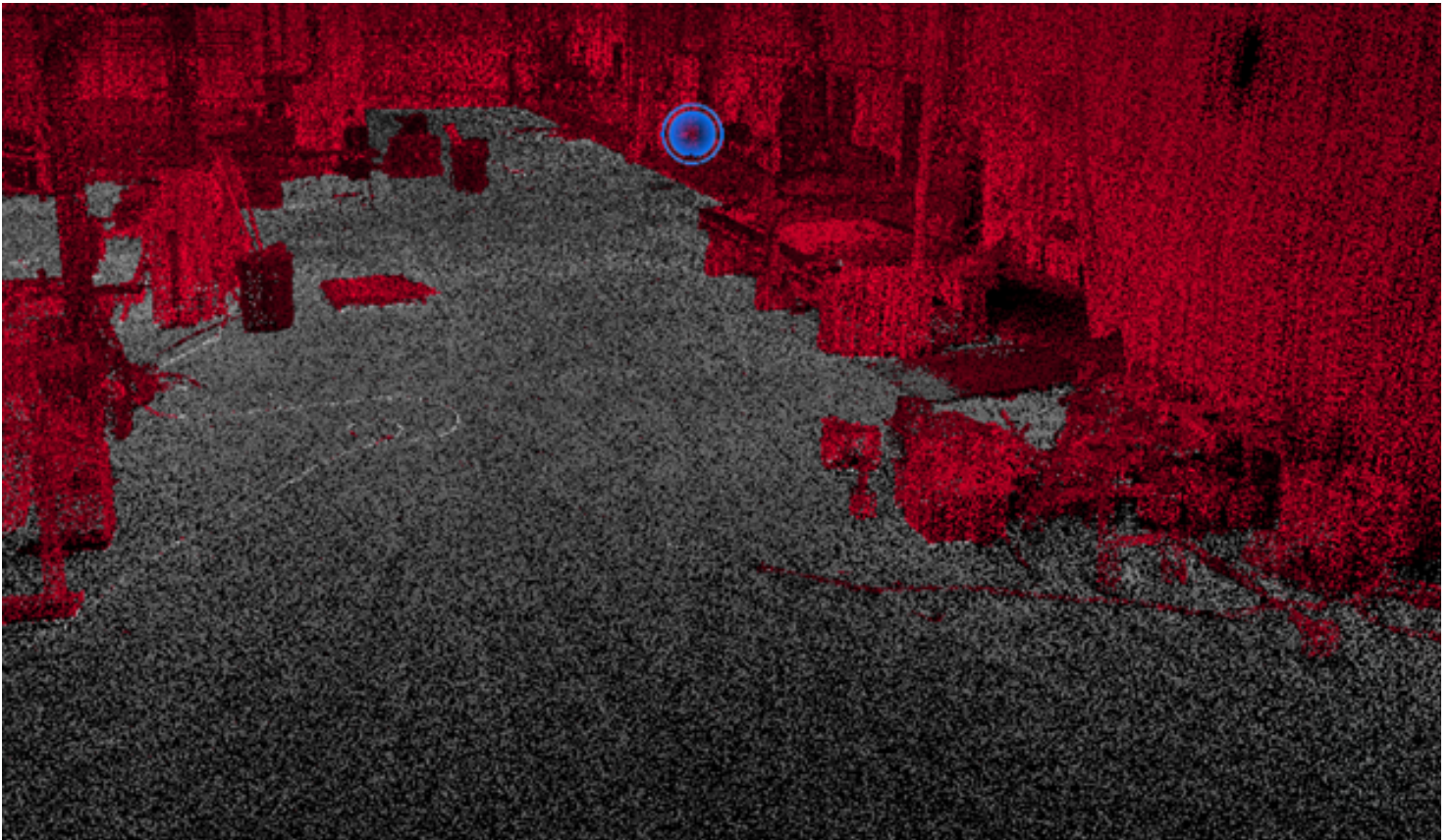
2. Hover over where it says SiteMap in the Bottom right of the screen and then click on Setup Cloud.



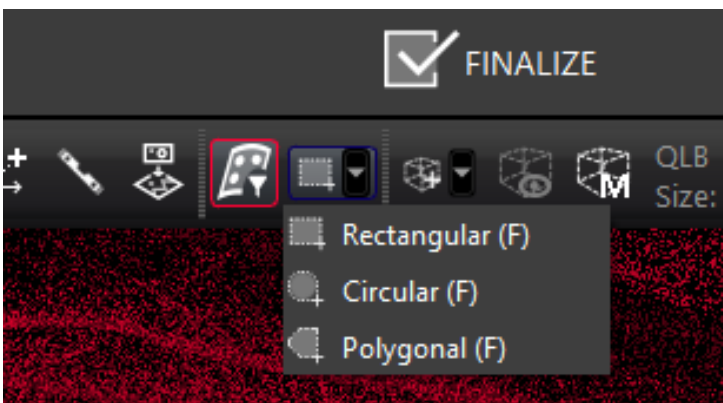
3. Click on the Find Smooth Surface tab. "Allows you to select areas to protect so you can delete other objects you want to remove."



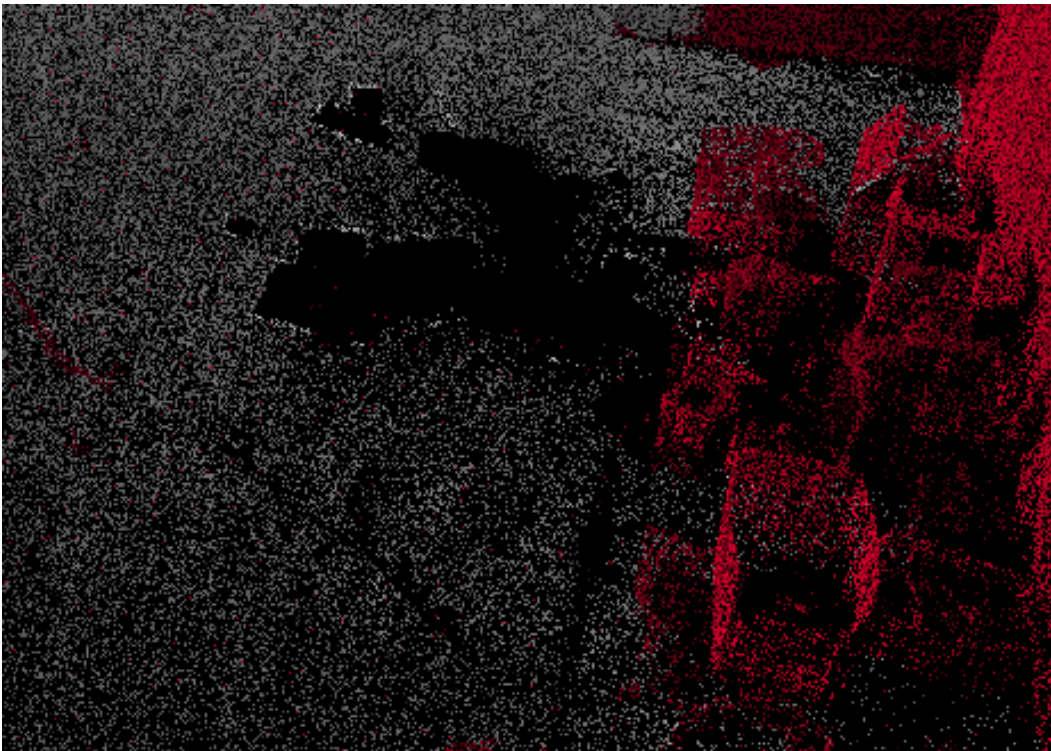
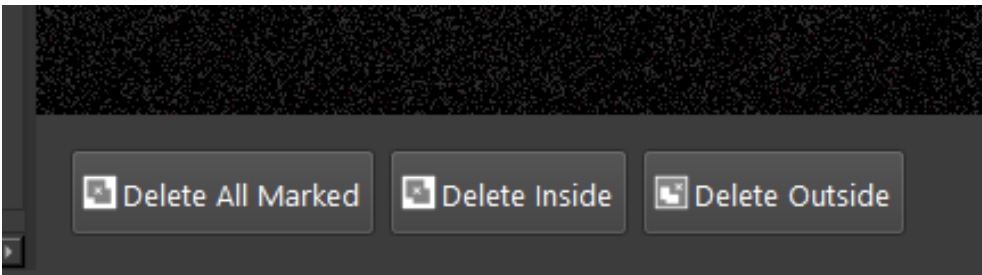
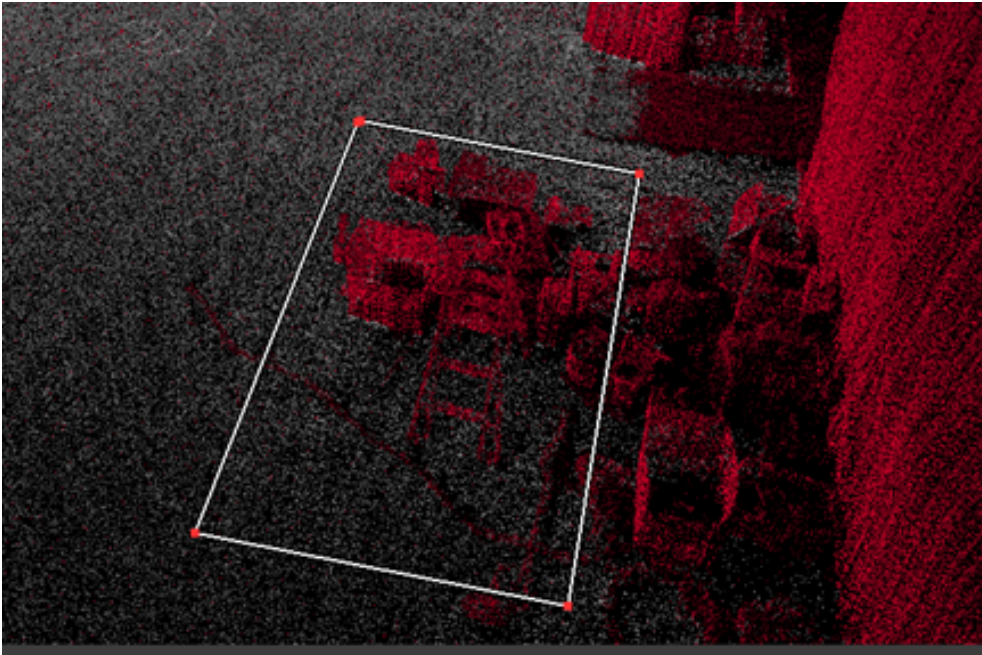
4. Double click on the area you want to protect or keep. That area will turn grey and everything else should turn red.



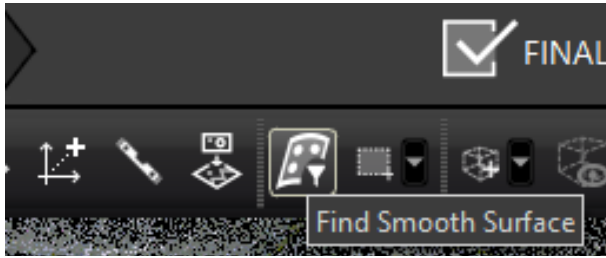
5. From here you can select the drop-down menu next to the rectangle. This allows you to choose a standard Rectangle shape, Circle Shape, or a Polygonal Shape "you create the shape."



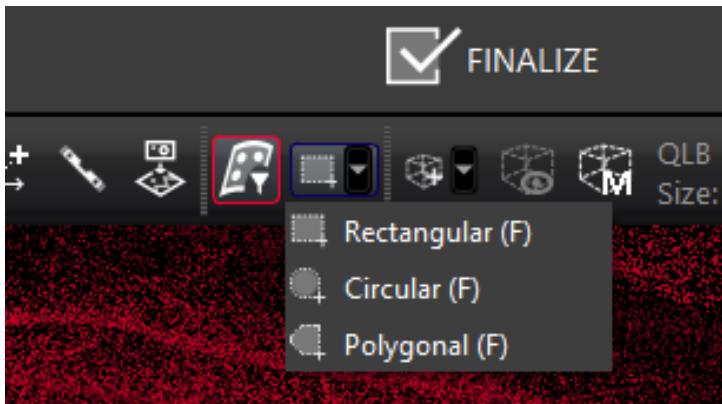
6. Next you select the items or areas you want to delete. Draw your shape around those items and select Delete Inside. This will delete the items in Red and leave the items in Grey.



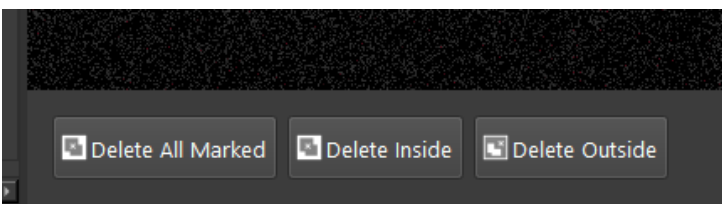
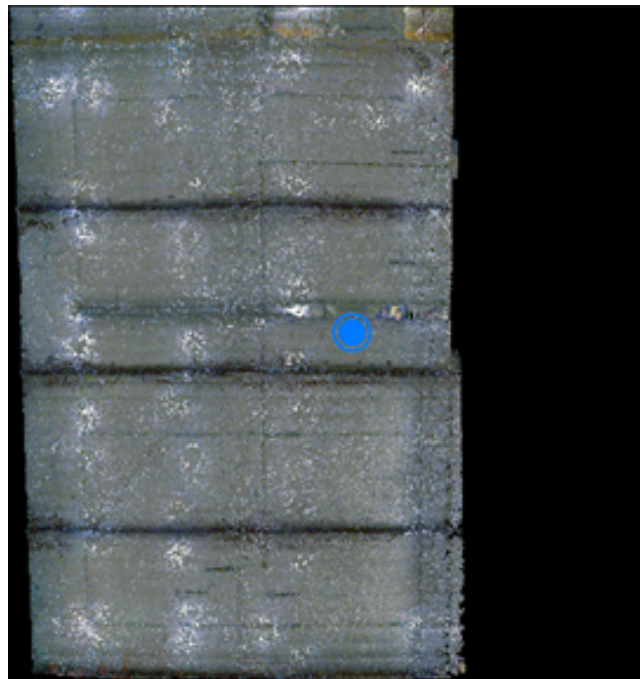
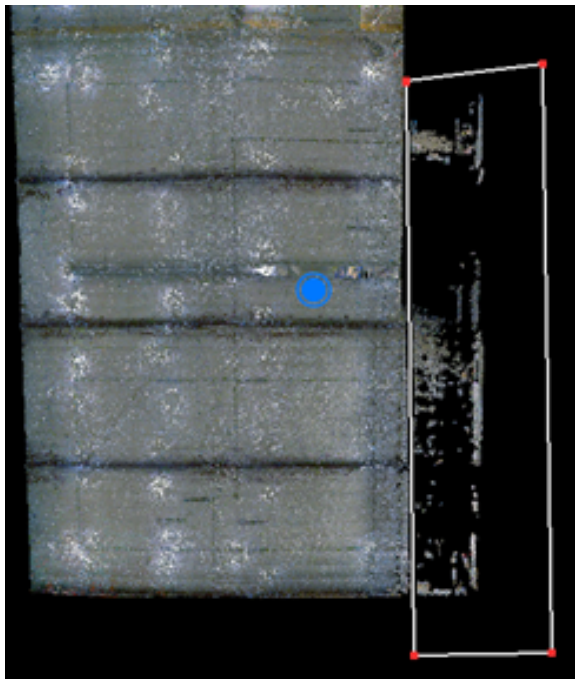
7. Once you're done you will click on the Find Smooth Surface Tab. "This will return the point cloud back to normal view. The items you deleted will stay gone."



8. If you want to delete other areas without using the Find Smooth Surface feature, all you have to do is click on the Rectangle shape, Circle Shape, or a Polygonal Shape "you create the shape."

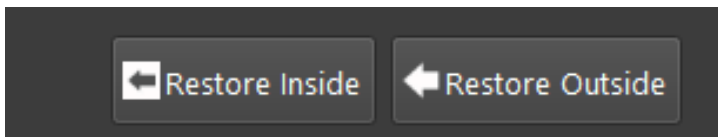
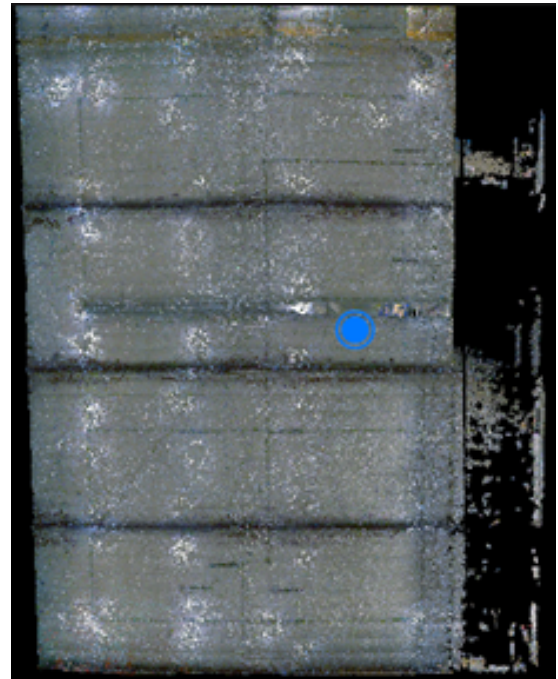
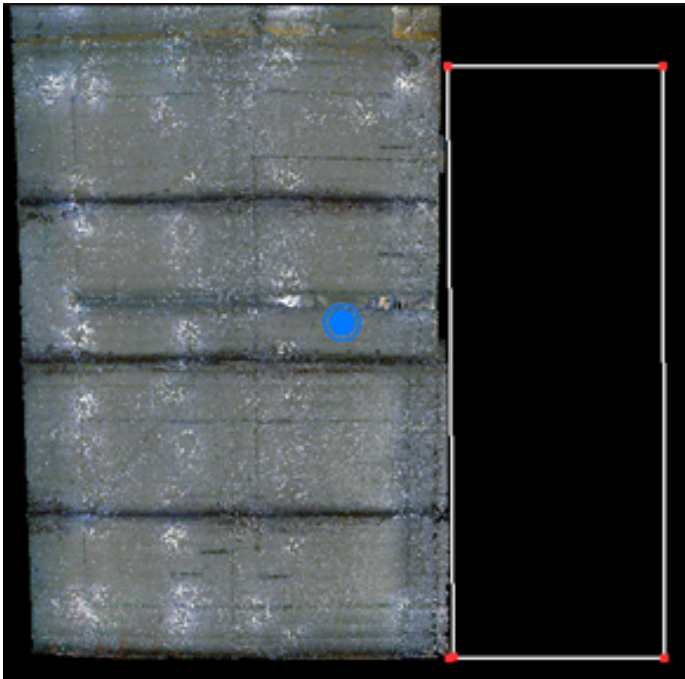


9. From here you select the items or areas you want to delete. Draw your shape around those items and select Delete Inside.



10. If you deleted too much of an area you can restore those areas in one of two ways.

First, you can draw a shape in that area and then click on Restore Inside and it will restore the deleted points inside the shape you drew.



11. Second, you can right click on the name of your scan. Hover over Restore Deleted Points and then click on Both. This will restore all deleted points.

“Only use this if you just started deleting points and/or don’t mind starting over.”

