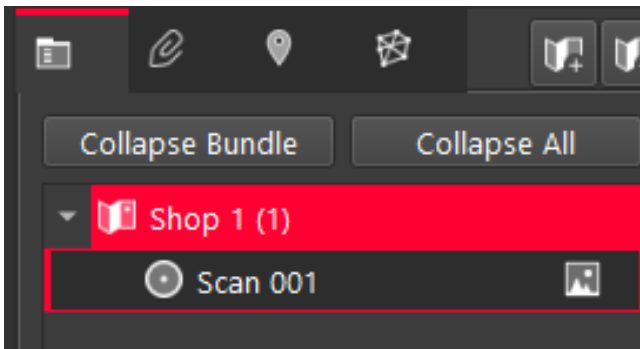


when it has to be **right**

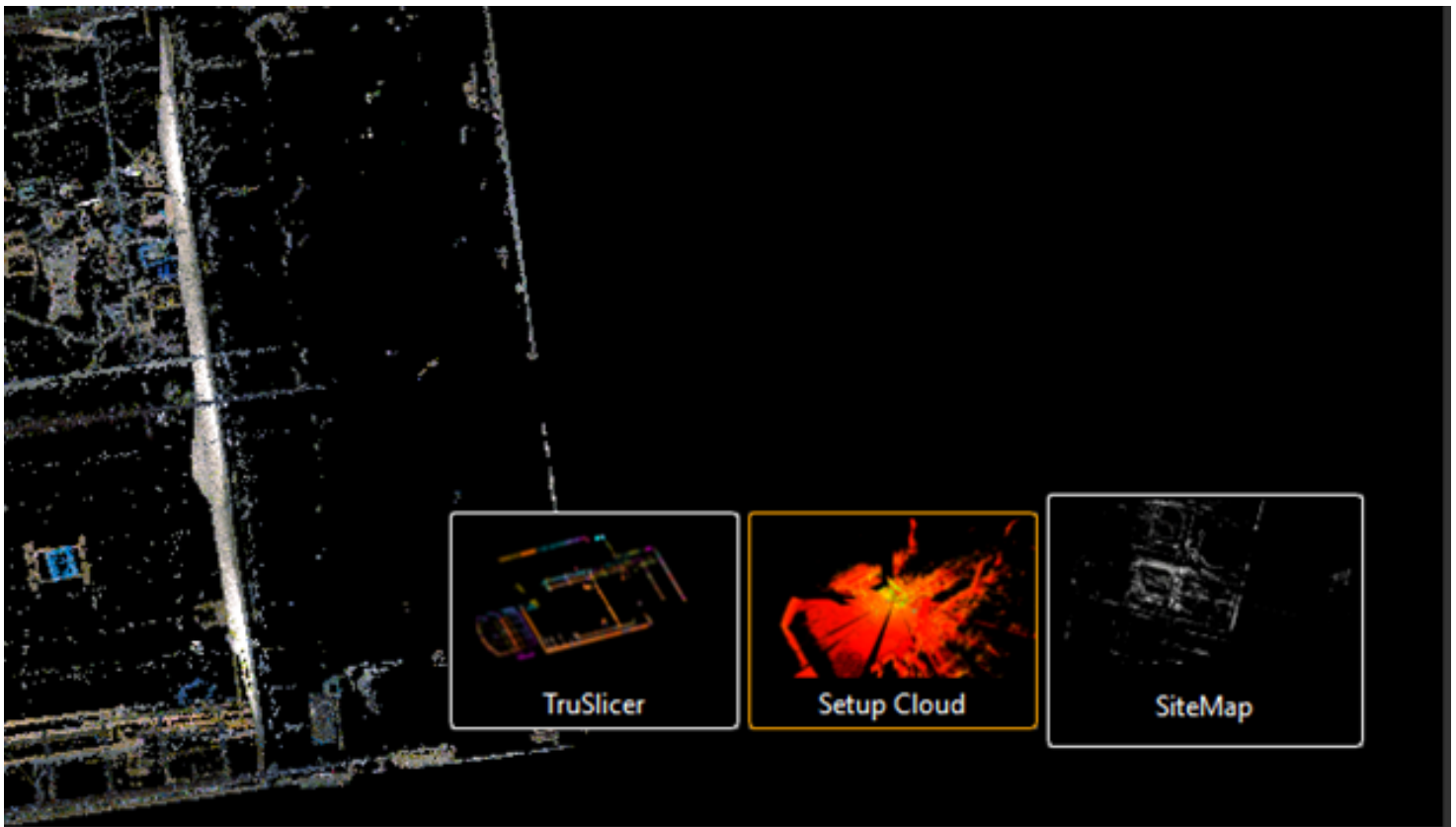


CREATE LIMIT BOXES IN CYCLONE REGISTER 360 WITH BLK ARC DATA

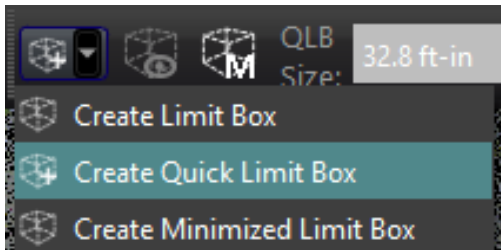
1. Press the drop-down area next to the site map and then click on the name of your scan.



2. Hover over where it says SiteMap in the Bottom right of the screen and then click on Setup Cloud.



3. Select create quick limit box



4. Double click on your scan and the limit box will appear.

Adjust the box to fit the area that you want it to include.

Once your limit box is where you want it, click on Limit Box Manager.

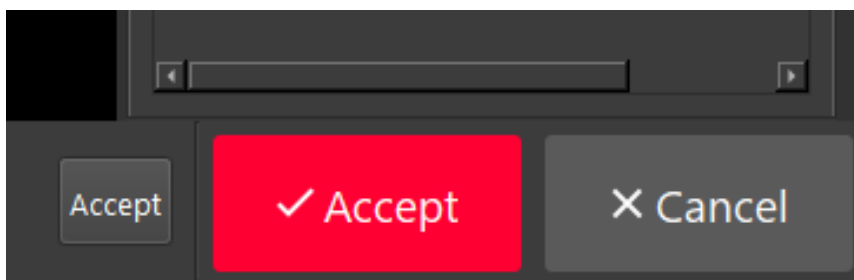
Click the Save button.

"If you double click on the name, you can rename the limit box, once done press the enter button."

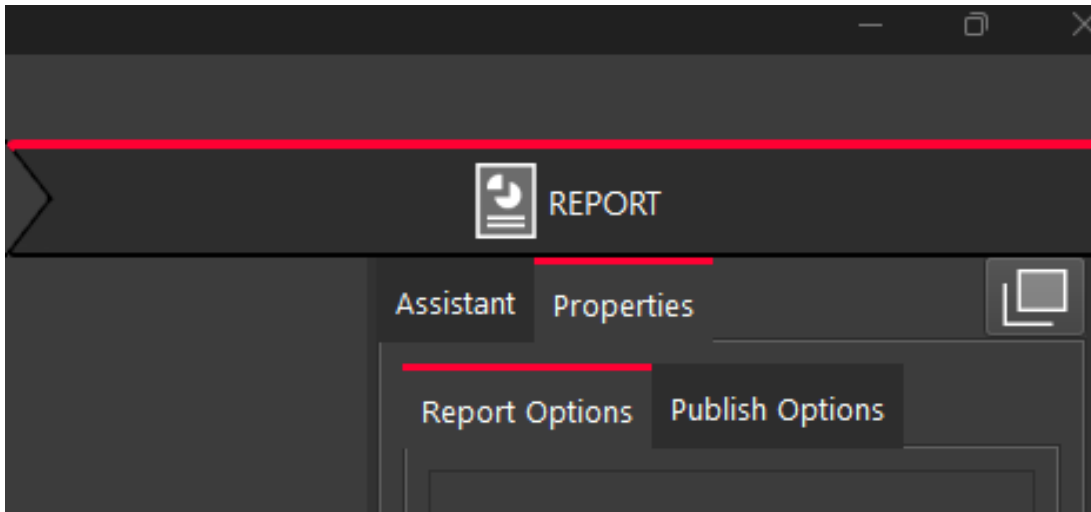
In here you can make your limit boxes active, visible, you can lock them so they don't change, and you can export them. You want to make sure you check the export boxes for your limit boxes. Once done press the X in the top right corner of the limit box manager box.

Once you are done with all your limit boxes and cleaning up your point cloud we want to export your scans.

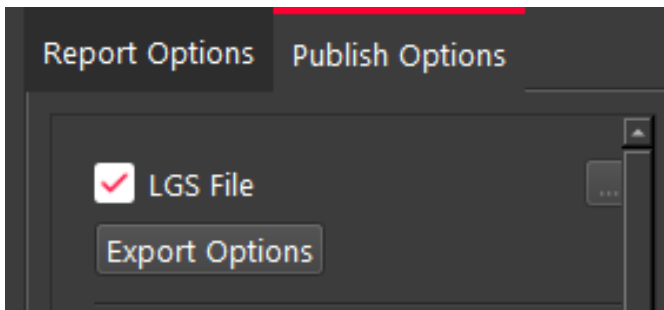
Click on the Finalize tab at the top of the screen, then click on the small Accept button, then the Big Accept button on the bottom right corner of the screen.



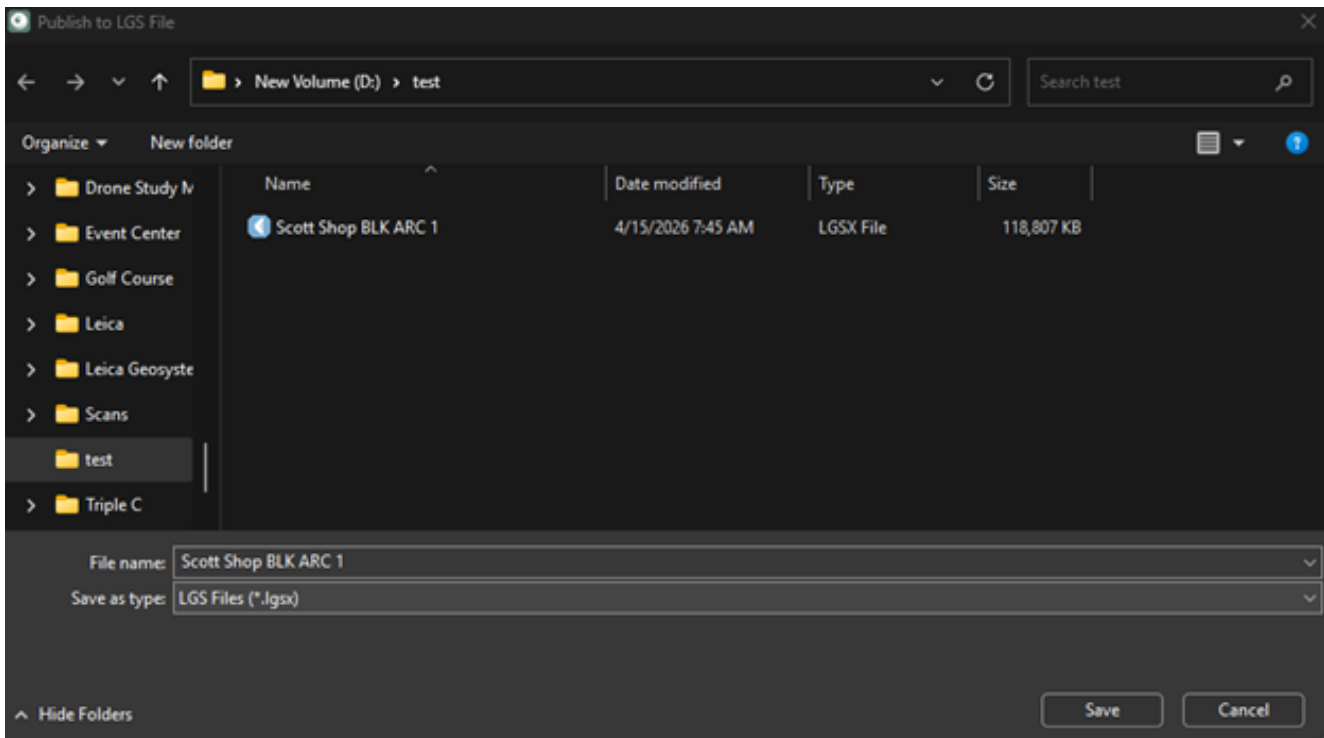
5. Click on the Publish Options tab on the top right corner of the screen.



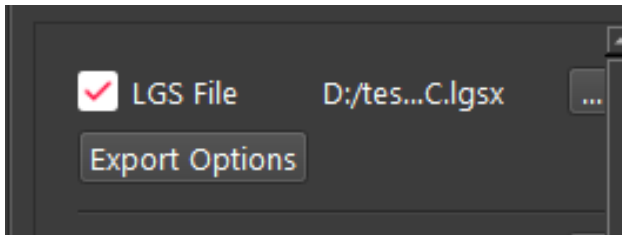
6. If you're doing the LGS file to export, you want to select that box. "It's the first option on the list"



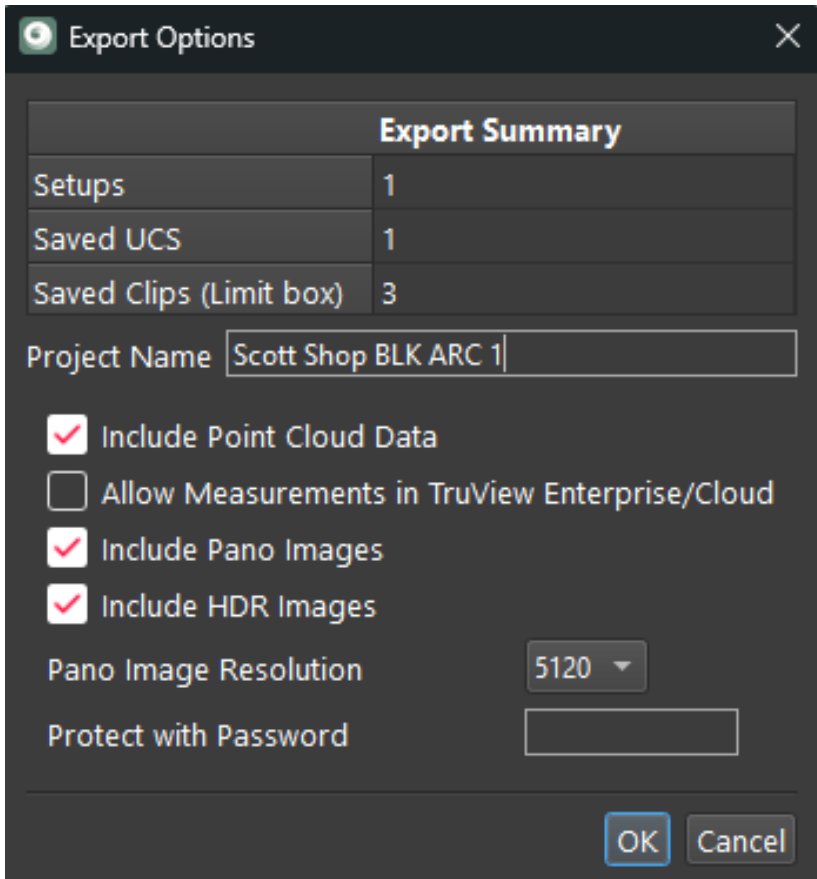
7. From here a pop-up screen will appear for where you want to save the exported file. Once you name the file and select where you want it to be stored you will click the save button



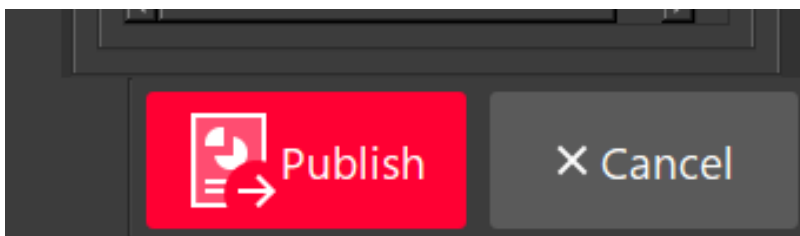
8. Next you will select the Export Options tab underneath the LGS File option you selected.



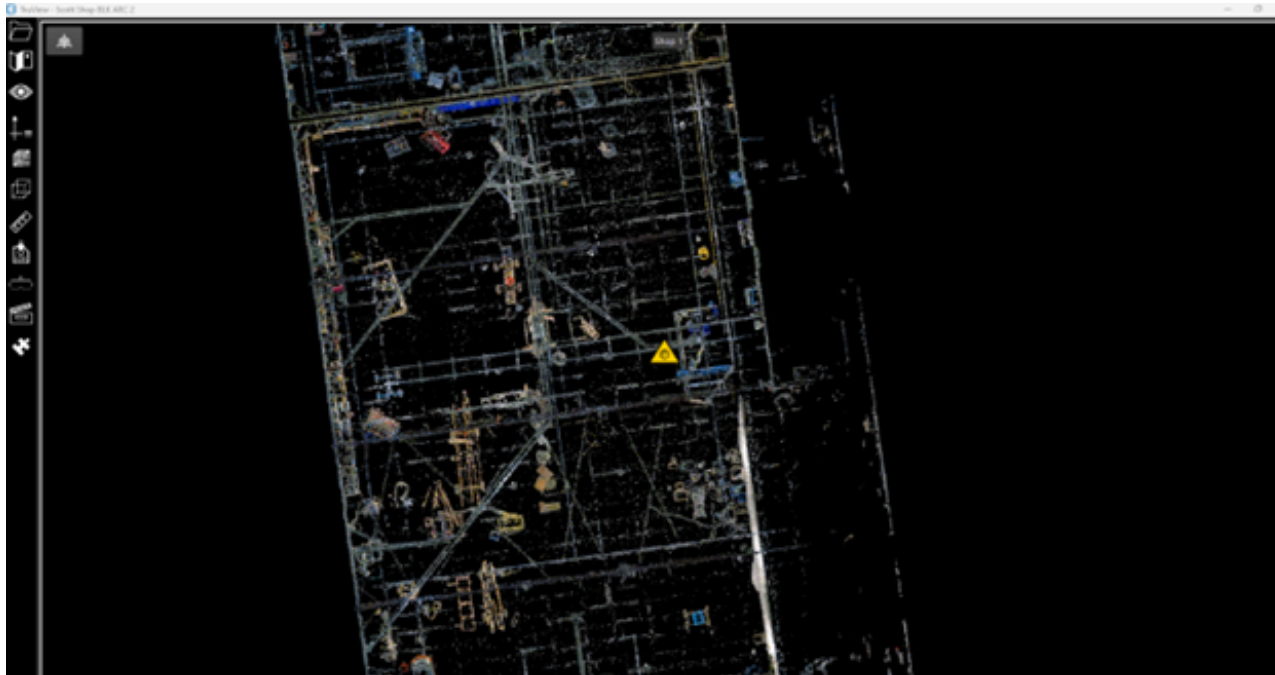
9. When the pop-up screen appears, you want to make sure that it shows how many Saved Clips (Limit box) is how many limit boxes you created. You also want to make sure that the boxes for Include Point Cloud Data, Include Pano Images, & Include HDR Images are checked.



10. Next you will click the Ok button.
Then you will click on the Publish button at the bottom right of the screen.



11. If you open your LGS file in the Leica TruView software, you can do the following steps to see the point cloud, and the limit boxes you created. When TruView opens you want to click on the Box with the 3 arrows coming out of the corners in the top left corner of the screen. "This will show you the 3D point cloud"



12. You will click on the Saved Clips Icon on the left side of the screen.



13. When you click on the Saved Clips tab you will see a pop-up screen where you can check which limit box you want to turn on. When you do this that will be the only part of the point cloud to show up.

